

Overview

ManageEngine Network Configuration Manager is a comprehensive network configuration and change management (NCCM) solution with support for 500+ device templates across 6,000+ device models from multiple vendors. It equips network administrators with automated configuration backups, real-time change tracking, compliance management, and vulnerability detection, enabling efficient, error-free management of network infrastructures at scale.



Facts

4000+

Trusted by over 4,000 major companies around the globe in different sectors

15+

15 plus years of experience in managing and transforming network infrastructure

120+

Used across over 120 countries

20

Available in 20 languages

Scalability facts

Up to **50,000** devices can be handled

More than **6000** device models supported

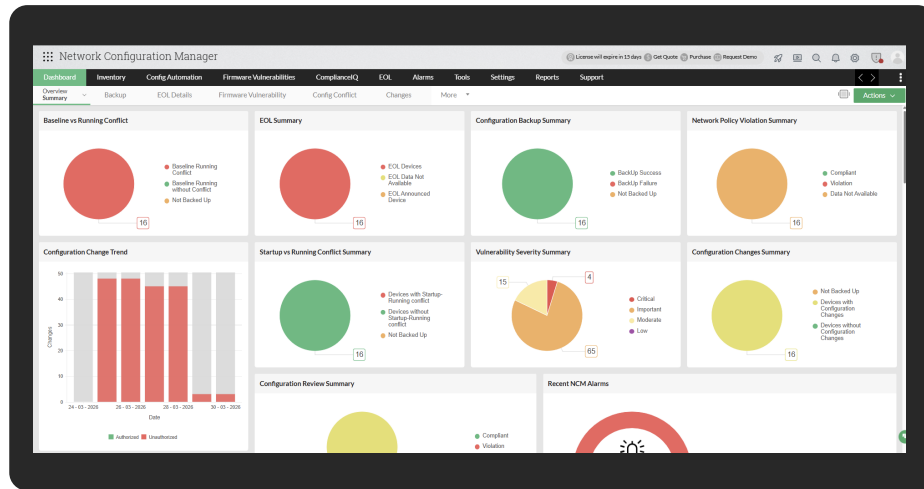
Supports more than **500** device templates

Get **unlimited** device configurations and user packs

Product benefits

- Reduce network administration costs and achieve faster ROI.
- Boost productivity with automated configuration backup, bulk management, and disaster recovery.
- Strengthen security with real-time change tracking and instant vulnerability detection.
- Ensure compliance with CIS, STIG, HIPAA, and SOX through built-in compliance management.
- Minimize human error by automating routine configuration tasks across your network.

Features and highlights



Reports/integrations

- Get real-time, scheduled, and advanced custom reports on network metrics.
- Integrate with in-house (OPM, NFA) and third-party solutions (PagerDuty, Password Manager Pro, etc.).

Vulnerability management

- Access CVE details instantly with severity ratings, base scores, and status tracking.
- Stay informed with counters tracking total vulnerabilities, critical threats, and exploitable weaknesses.

Automation with Configlets

- Automate tasks and troubleshooting commands in bulk using script templates, with Programmable Configlets supporting conditional logic, loops, and device-specific parameters.
- Group and schedule configlets as needed.
- Manage configurations via REST API.

EOL/EOS Management

- Track device lifecycles with built-in EOL/EOS management powered by vendor data.
- Auto-sync the EOL/EOS database daily, with manual import for closed networks.
- View devices by lifecycle stage and identify those nearing end-of-support for timely replacements.

Configuration backup/restore

- Back up startup, running, VLAN, and other device-specific configurations.
- Initiate bulk, scheduled, or change-triggered automated backups.
- Restore backups instantly during outages.

Change management

- Receive immediate alerts via email, SNMP traps, syslog, or tickets.
- Control user access with role-based access control.
- Compare configurations and automatically rollback to the previous stable configuration.

Compliance management

- Adhere to pre-configured CIS, STIG, SOX, and HIPAA policies, and also tailor custom policies to specific requirements.
- Build and enforce intelligent compliance rules with conditional logic, block-level validation, command execution-based checks, and automated remediation using ComplianceIQ.

Enterprise Edition

- Deploy a Central Server with multiple Probe Servers to manage 1,000+ devices across distributed networks, auto-syncing configuration data, configlets, and device templates.
- Consolidate data and reports from all probes into the Central Server for unified visibility.

System requirements

Minimum hardware requirements

- 4GB RAM
- 2GHz dual-core or higher
- 100GB of hard disk space

Recommended hardware requirements

- 16-32GB RAM
- 3GHz quad-core or higher
- 300-500GB of hard disk space

Software requirements for evaluation

- Windows: Windows 11 (or) Windows Server 2025/ 2022/ 2019/ 2016
- Linux: Ubuntu 16 to 25/ Fedora 42/ Red Hat 7, 8, 9, 10/ Opensuse 15/ Debian 11, 12, 13/ Rocky 10/ BOSS 10
- Web client: Google Chrome/ Mozilla Firefox/ Microsoft Edge

To know more about other requirements, click [here](#).

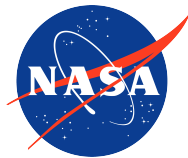
Features	Free Edition	Professional	Enterprise
Starting Price	Free	\$595 (10 devices)	\$8395 (250 devices)
Max Devices Count	2 devices	10,000	50,000
Manage up to 10000 devices	✗	✓	✓
24x5 technical support	✗	✓	✓
Multi-Site / Distributed Network Configuration Management	✗	✗	✓
Automatic data sync between all probes (Multiple sites)	✗	✗	✓
Smart Upgrade - Automatic PPM Upgrade for all probes	✗	✗	✓
Collective data/reports in the central server	✗	✗	✓



ManageEngine Network Configuration Manager has proven a very useful tool to help Federal Signal, Inc. manage multiple vendors equipment across multiple geographic locations. It has allowed us to effectively manage remote device configurations and implement effective change control for network infrastructure.

-Larry Ware, Federal Signal Global Network Boffin

| Trusted customers



AT&T



SIEMENS

IBM

Grab your 30-day free trial

Get a free demo

Download free trial

Request for a demo